



Mobile Team Challenge
 Maximise the Potential of Your People
www.mtceurope.co.uk

10% Discount

MTC

**GUARANTEED
 TO BRING
 THE BEST
 OUT OF
 YOUR
 PEOPLE!**

MTC Programmes

One and Two Day Organisational Development Programmes

Appreciative Inquiry and Experiential Learning is fast becoming the first choice for **Organisational Development Training and Leadership**

**PLUS
 Experiential
 Indoor
 Ropes Course
 in Your Office!**

- ▲ Appreciative Inquiry
- ▲ Graduate Training
- ▲ Leadership Development
- ▲ Executive Development
- ▲ Change Management
- ▲ Effective Communication
- ▲ Team Development
- ▲ Conflict Resolution
- ▲ Lifestyle Balance
- ▲ Strategic Planning
- ▲ Client Care Excellence
- ▲ Consultancy
- ▲ Conflict to Collaboration Training
- ▲ Advanced Facilitator Training
- ▲ Appreciative Leadership Programme
- ▲ Appreciative Coaching
- ▲ New Recruit Training: Mentoring

We remember...



Thousands of Organisations already use and benefit from MTC Globally in 14 Countries, across 5 Continents including 80% of the Royal Air Force Stations within the UK

How can I be sure to choose the right Programme for my team?

Working together, your organisational development needs can be clearly identified and an effective programme chosen to maximise the potential of your people. MTC successfully delivers effective programmes that incorporate the Unique Patented MTC Equipment and Powerful Transformational

Appreciative Inquiry and Experiential Learning Principles!



Maximise Your Potential today!

t: 0870 165 7314
f: 0870 165 7324
e: info@mtceurope.co.uk
www.mtceurope.co.uk

84 Richmond Wood Road, Queens Park, Bournemouth, Dorset, BH8 9DJ

MTC Programmes One and Two Day Programmes



Mobile Team Challenge

Maximise the Potential of Your People
www.mtceurope.co.uk

MTC Programmes

One and Two Day
Organisational
Development
Programmes

Centred around Appreciative Inquiry and Experiential Learning Principles!

The MTC Programmes are designed to maximise the potential of your people through Appreciative Experiential Learning. Delivered to your Organisation at a location of your choice, over one or two days, MTC Programmes promise to be an effective solution for Organisational Development Strategy providing Exceptional Results!

Mobile Team Challenge Programmes are successfully making a difference in the:

- ▲ Corporate Sector
- ▲ Forces & Public Sector
- ▲ Youth & Community Division

What is your next step?

If you are interested in booking MTC Programmes please call Naomi Lions on:

0870 165 7314 or contact Naomi by post by returning the slip below or email Naomi: naomilions@mtceurope.co.uk or Visit MTC's website: www.mtceurope.co.uk today for more information!



**"Yes MTC
I'm interested.
Please contact me!"**



Appreciative Inquiry (AI)

- ▲ Focuses on Best Practice
- ▲ Reveals Positive Potential
- ▲ Accelerates Change
- ▲ Inspires High Energy
- ▲ Improves Team Performance



Graduate Training

- ▲ Accelerates Learning
- ▲ Business 'Models & Tools'
- ▲ Experiential and AI
- ▲ Develops Self Awareness
- ▲ Unleashes the Potential



Leadership Development

- ▲ Enhances Effectiveness
- ▲ Realises Full Potential
- ▲ Identifies Leadership Styles
- ▲ Improves Interpersonal Skills
- ▲ Develops Multi-Intelligence



Executive Development

- ▲ Explores Leadership Attributes
- ▲ Achieves 'Shared Vision'
- ▲ Owning strategic plans
- ▲ Business 'Models & Tools'
- ▲ Creates Powerful Teams



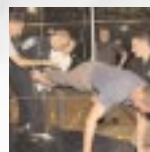
Change Management

- ▲ Encourages Imagination
- ▲ Incorporates AI Strategies
- ▲ Ensures collective Buy-in
- ▲ Innovative & Transformational
- ▲ Improves Performance



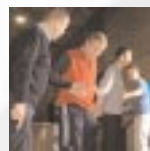
Effective Communication

- ▲ Developing Personal Skills
- ▲ Selecting media
- ▲ Explores possibilities
- ▲ Enhances dialogue
- ▲ guarantees results



Team Development

- ▲ Builds High Performance
- ▲ Challenges Participants
- ▲ Employs Experiential Learning
- ▲ Pursues Excellence
- ▲ Transferable Skills



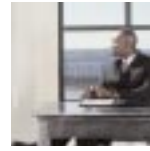
Conflict Resolution

- ▲ Improves Communication Skills
- ▲ Builds Rapport
- ▲ Living Beyond Conflict!
- ▲ Experiential and AI
- ▲ Combines Multiple-skills



Lifestyle Balance

- ▲ Teaches Controls for Life
- ▲ Coaching for work & Life
- ▲ Improves Stress Control
- ▲ Focuses on what really matters
- ▲ Achieves practical solutions



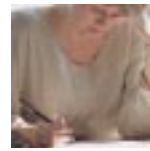
Strategic Planning

- ▲ Recognises Strength
- ▲ Expands strategic initiatives
- ▲ Analyses Effectiveness
- ▲ Prioritising Tools and Techniques
- ▲ Maximises Potential



Client Care Excellence

- ▲ Explores Customer Satisfaction
- ▲ Creates a 'Can Do' Attitude
- ▲ Adds Value to all aspects
- ▲ Solution Focused
- ▲ Introduces Fun!



Consultancy

- ▲ Maximises Opportunities
- ▲ Uses Creative Thinking
- ▲ Shared Ownership
- ▲ Introduces Change
- ▲ Analyses what is working!



Conflict to Collaboration Training

- ▲ Thinks about Thinking
- ▲ Communication Styles
- ▲ Principles and Application of AI



Advanced Facilitator Training

- ▲ Learning & Training Styles
- ▲ Exploring Perceptions
- ▲ Behavioural Change
- ▲ Learning Outcomes and Change



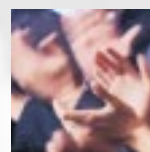
Appreciative Leadership Programme

- ▲ Leadership Attributes
- ▲ Appreciative Leadership Principles
- ▲ Managing the Effects of Change
- ▲ Strategic Planning



Appreciative Coaching

- ▲ Unleashing the inner potential
- ▲ Creating Behavioural Change
- ▲ Visualising an Appreciative Vision
- ▲ Prioritisation and Self Belief



New Recruit Training: Mentoring

- ▲ The 4 Leadership Attributes
- ▲ Managing the Effects of Change
- ▲ Understanding the 4 Cultures
- ▲ 10 Leadership and Followership Principles

MTC/P/3/2006
Naomi Lions (MTC Programmes)
Mobile Team Challenge Limited
84 Richmond Wood Road
Queens Park
Bournemouth
Dorset BH8 9DJ

Cut off this corner and send back in a DL window envelope - **STAMP REQUIRED**

Name:Tel:

Address:

..... Email:

MTC/P/3/2006